

IScomply

GetSolution's answer
for GDPR governance



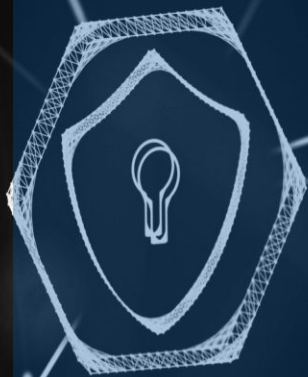


TABLE OF CONTENTS

What is IScomply?	3
Which are the processes managed by IScomply?	4
How does Iscomply work?	5
Iscomply advantages	6
Who is GetSolution?	7
GetSolution services	8

What is IScomply?

IScomply is a **GRC** (Governance, Risk and Compliance) **Platform** in SaaS (Software as a Service). It allows to manage all the formalities to reach the compliance with the **GDPR**.

Through the integration with a document system, the workflows defined by the Platform allow the collection of information, its registration and processing for the purpose of drafting, modifying, approving, signing and archiving all the documentation prepared under the GDPR.



Which are the Processes managed by IScomply?

- **Registration of personal data processing activities**, through a process of approval.
- **Implementation of DPIA** (Data Protection Impact Assessments).
- **Creation of an inventory of the ICT systems** involved in the processing of personal data.
- **Creation of an inventory of paper archives**, prepared for the conservation of the processed data.
- **Risk analysis on ICT systems** and definition of suitable security measures to be adopted.
- **Creation of a suppliers master data** and their association with the personal data processing activities.
- **Creation of clients details** and their association with multiple personal data processing activities for which the Company acts as Data Processor or Sub-Processor.
- **Creation of Joint Data Controllers details** and their association with multiple personal data processing activities.
- **Creation of the Authorized data processing master data.**
- **Creation of the System Administrators master data.**
- **Collection of requests from data subjects.**
- **Easier data breach management.**

≡ DASHBOARD

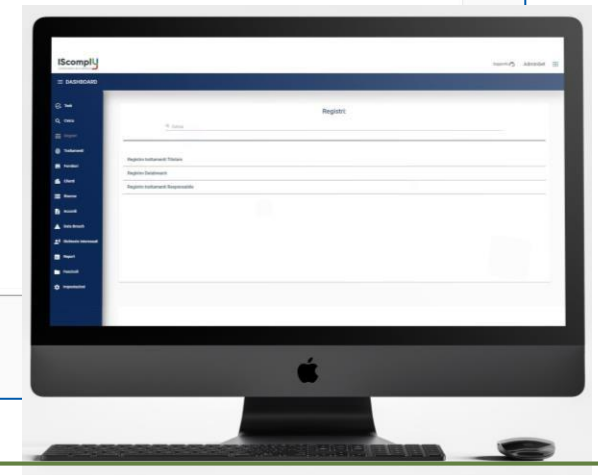
-  Task
-  Cerca
-  Registri
-  Trattamenti
-  Fornitori
-  Clienti
-  Risorse
-  Accordi
-  Data Breach
-  Richieste interessati
-  Report
-  Fascicoli
-  Impostazioni

Registri:

Registro trattamenti Titolare

Registro Databreach

Registro trattamenti Responsabile





How does Iscomply work?

The workflow assigns **tasks** to the users of corporate functions involved in the fields of **compliance** and **governance**, in order to:

- collect and verify the necessary information;
- verify and approve the activities performed by colleagues or the documentation received from other business functions or from third parties, according to a hierarchical setting of roles defined in Iscomply;
- prepare the necessary documentation through a process of compiling, checking and approving the documents, sharing them with third parties, reprocessing in pdf and digital signatures;
- guide users in the completion of their activities, according to their own roles;
- create a «file» related to each person involved in the processing activities, which contains all the information and documents

Iscomply workflow

Assets management

- Create new component
- Create new system
- Create new document archive

Processing activities management

- Create new processing activities
- Assign processing activity
- DPIA
- Create a new security measure
- Group together organisational security measures

Master data management

- Create new suppliers master data
- Create new clients details

Appointments

- Associate data processing to supplier
- Create DPA
- Associate data processing to client
- Appointment of authorized subjects
- Appointment of System Administrators
- Joint Controllers agreement

- Controller's record of processing activities
- Processor's record of processing activities
- Data breach record

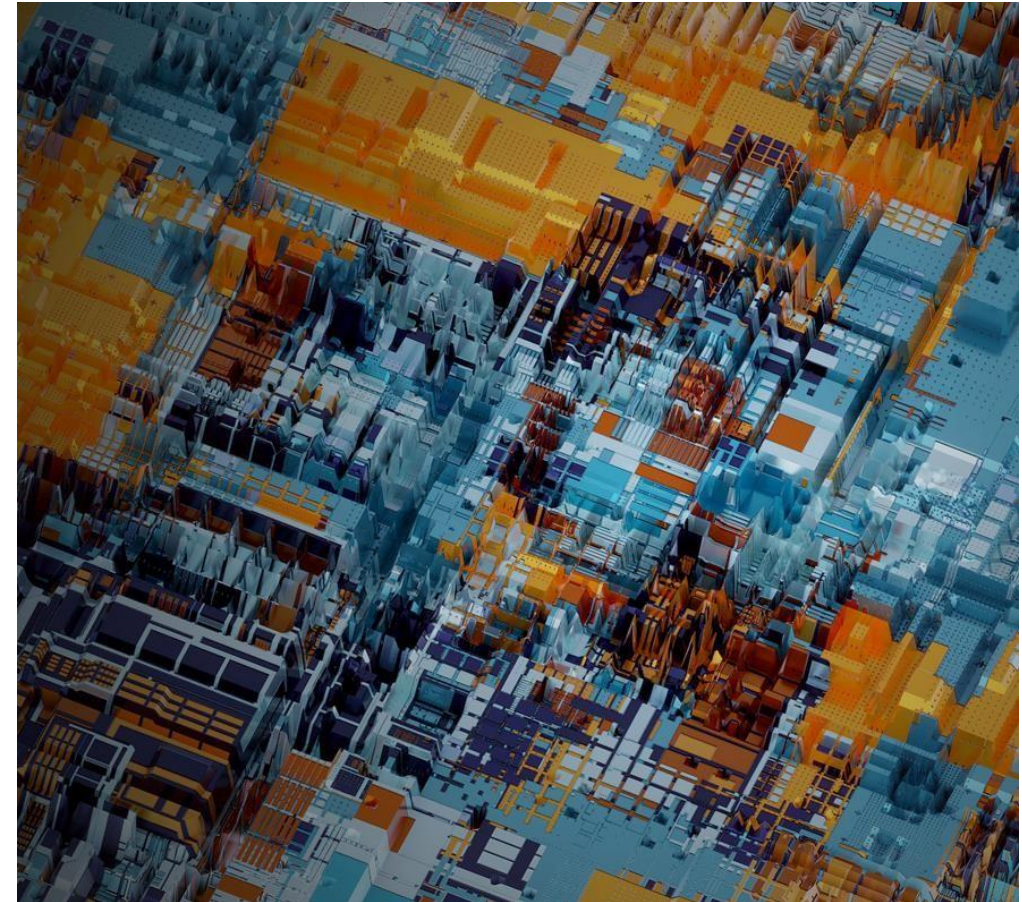
Iscomply advantages

- **Management of all the legal compliance that is needed**, included the recording of processing activities and the recording of the relations with clients, suppliers, authorized subjects and joint controllers;
- **Mangement of the life-cycle of documents**: it allows to create, verify, approve, and sign all the documentation that is produced for the compliance to the GDPR;
- **Integration with already existing GDPR documents**;
- **Risk Analysis** of a single processing activity;
- **Easier management of the relations with data subjects**;
- **Multilingualism**: it is born to be used in international contexts;
- **Flexibility**: there is the possibility to customize the software according to the specific workflow adopted in the company;
- **Task assignement** with the possibility to add notes for the following user;
- **Creation of Reports that can be viewed on the dashboard.**

Who is GetSolution?

It is a consultancy company specialized in the fields of **compliance**, **cyber security** and **governance**.

The distinctive aspect of GetSolution on the market is its ability to **study and create new services**, continuously improving its offer with the aim of anticipating the needs of the market and of companies.



GetSolution services

COMPLIANCE AND GOVERNANCE

Respect of the compliance with legal provisions and international standards concerns various matters: finance, accounting, quality, information security systems, occupational safety, and operational continuity.

CYBER SECURITY

The service that is provided by Cyber Security Professionals Experts through a consulting activity.

RISK ANALYSIS AND MANAGEMENT

The service uses a proprietary methodology, which has been developed thanks to our decades of domestic and international experience in the field of Information Security Systems.



IScomply
COMPLIANCE AS A SERVICE

GET
SOLUTION 

Via Fabio Filzi, 23
20124 Milano, Italy

Tel. +39 02 39661701
Fax: +39 02 39661800

gdpr@getsolution.it
www.getsolution.com